

2016

Nordic EMBL Partnership  
for Molecular Medicine



# JANUARY 2016

DECEMBER 2015  
 1 2 3 4 5 6  
 7 8 9 10 11 12 13  
 14 15 16 17 18 19 20  
 21 22 23 24 25 26 27  
 28 29 30 31

FEBRUARY 2016  
 1 2 3 4 5 6 7  
 8 9 10 11 12 13 14  
 15 16 17 18 19 20 21  
 22 23 24 25 26 27 28  
 29

Monday	Tuesday	Wednesday	Thursday	Friday	Saturday	Sunday
				1	2	3
4	5	6	7	8	9	10
11	12	13	14	15	16	17
18	19	20	21	22	23	24
25	26	27	28	29	30	31

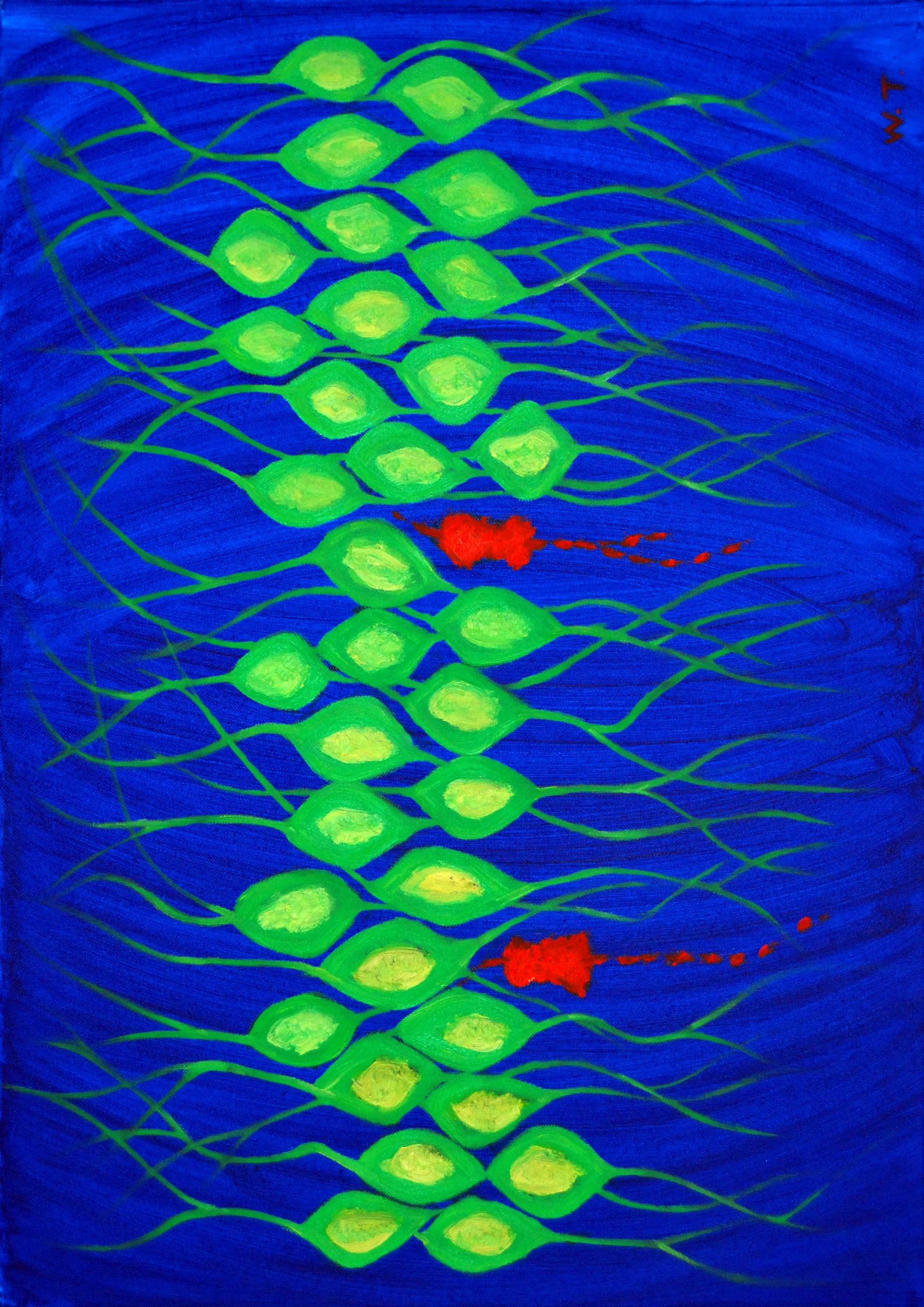
1

2

3

4

5



W.T.

# FEBRUARY 2016

JANUARY 2016

1 2 3  
4 5 6 7 8 9 10  
11 12 13 14 15 16 17  
18 19 20 21 22 23 24  
25 26 27 28 29 30 31

MARCH 2016

1 2 3 4 5 6  
7 8 9 10 11 12 13  
14 15 16 17 18 19 20  
21 22 23 24 25 26 27  
28 29 30 31

Monday	Tuesday	Wednesday	Thursday	Friday	Saturday	Sunday
1	2	3	4	5	6	7
8	9	10	11	12	13	14
15	16	17	18	19	20	21
22	23	24	25	26	27	28
29						

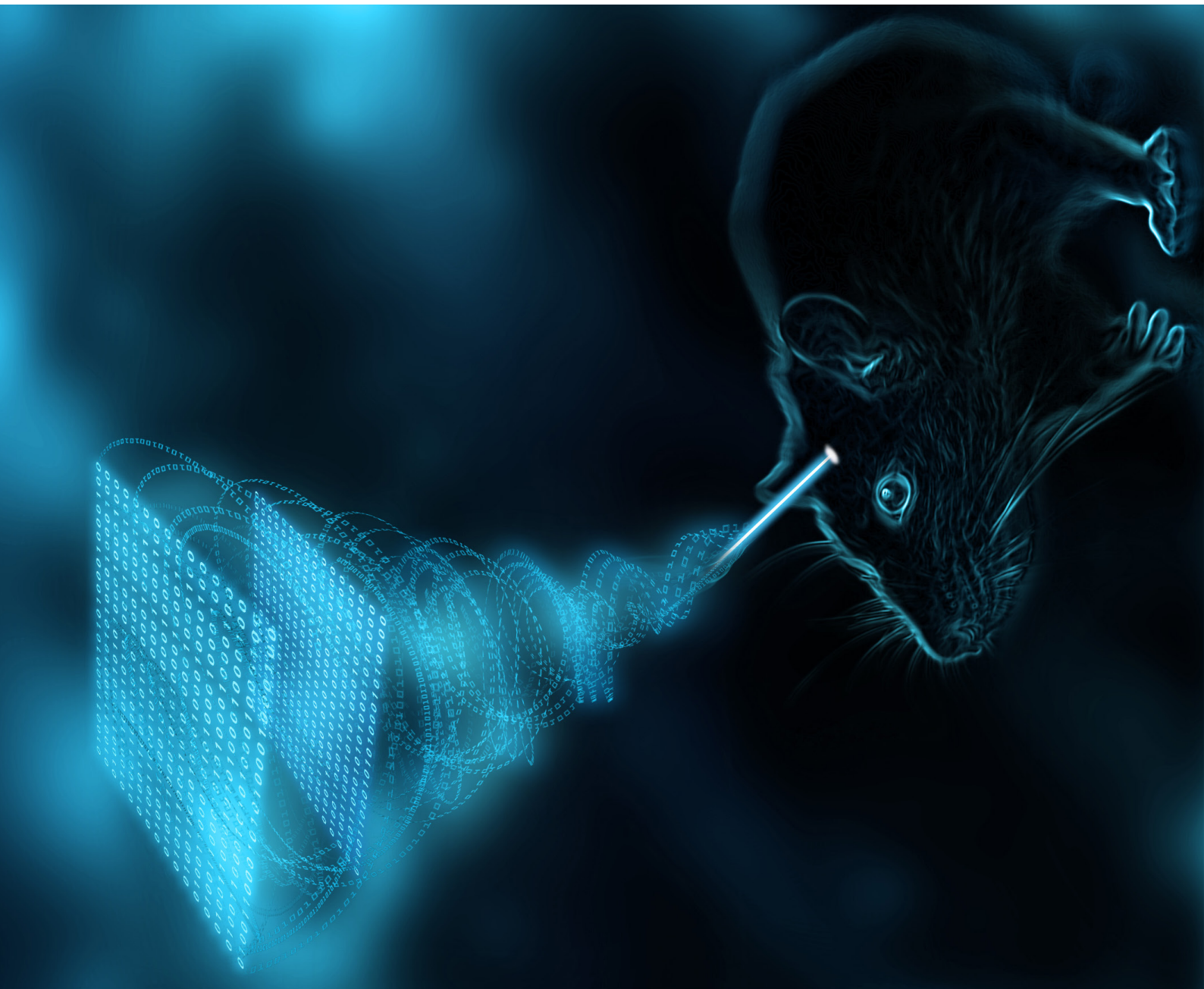
6

7

8

9

10



# MARCH 2016

FEBRUARY 2016

1 2 3 4 5 6 7  
8 9 10 11 12 13 14  
15 16 17 18 19 20 21  
22 23 24 25 26 27 28  
29

APRIL 2016

1 2 3  
4 5 6 7 8 9 10  
11 12 13 14 15 16 17  
18 19 20 21 22 23 24  
25 26 27 28 29 30

Monday	Tuesday	Wednesday	Thursday	Friday	Saturday	Sunday
	1	2	3	4	5	6
7	8	9	10	11	12	13
14	15	16	17	18	19	20
21	22	23	24	25	26	27
28	29	30	31			

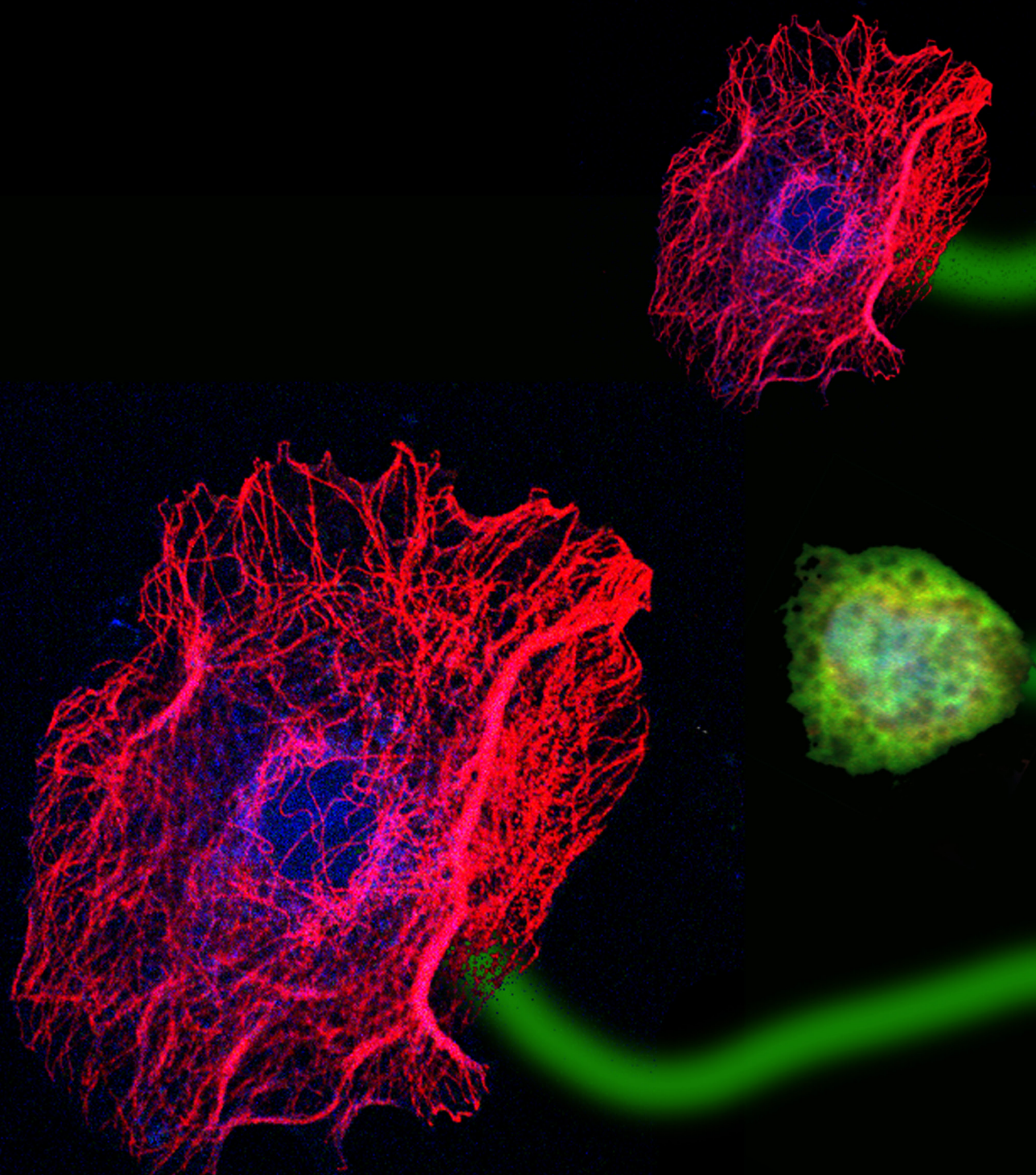
10

11

12

13

14





# APRIL 2016

March 2016

1 2 3 4 5 6  
7 8 9 10 11 12 13  
14 15 16 17 18 19 20  
21 22 23 24 25 26 27  
28 29 30 31

MAY 2016

1  
2 3 4 5 6 7 8  
9 10 11 12 13 14 15  
16 17 18 19 20 21 22  
23 24 25 26 27 28 29  
30 31

Monday	Tuesday	Wednesday	Thursday	Friday	Saturday	Sunday
				1	2	3
4	5	6	7	8	9	10
11	12	13	14	15	16	17
18	19	20	21	22	23	24
25	26	27	28	29	30	

14

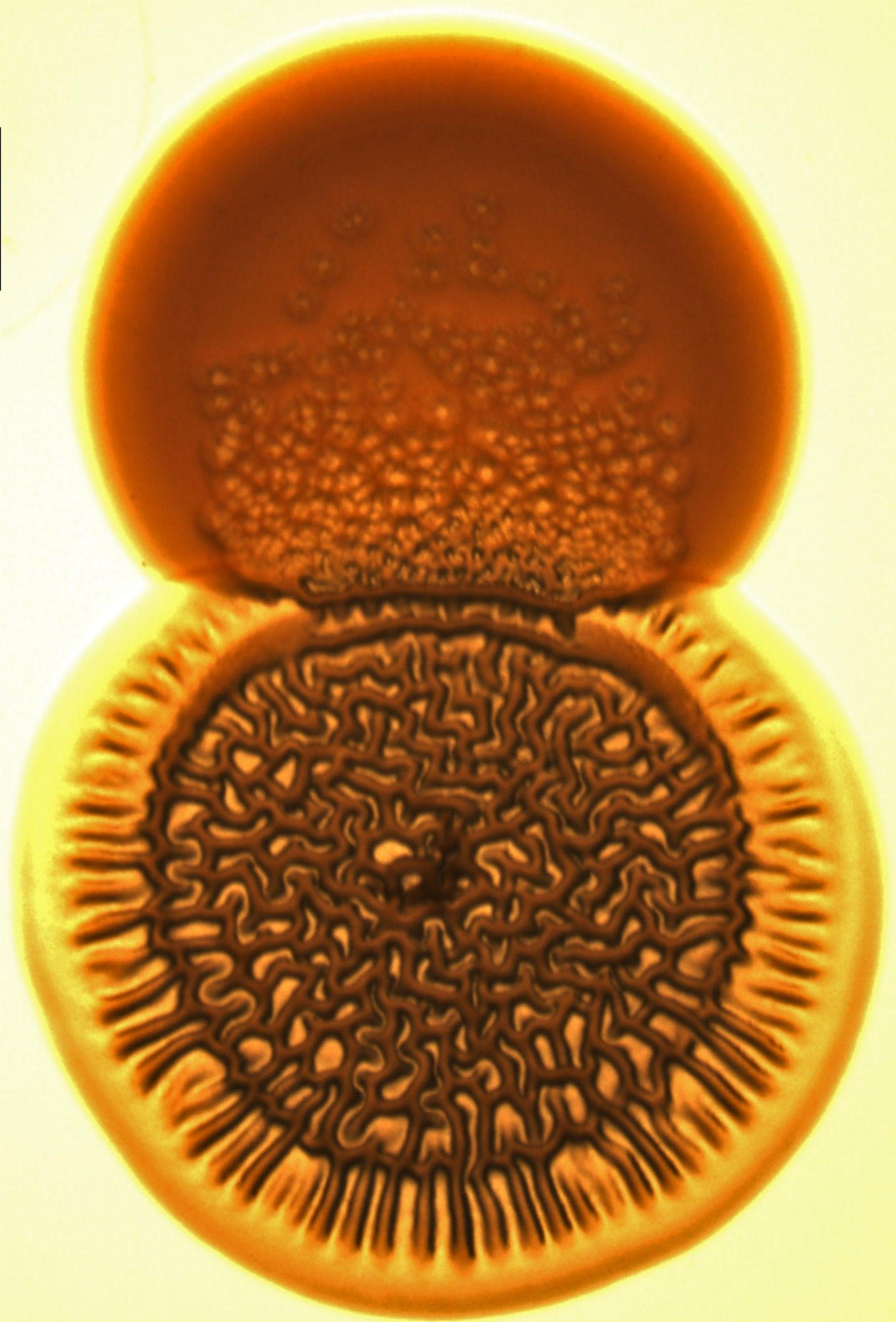
15

16

17

18

1000  $\mu\text{m}$



# MAY 2016

APRIL 2016

1 2 3  
4 5 6 7 8 9 10  
11 12 13 14 15 16 17  
18 19 20 21 22 23 24  
25 26 27 28 29 30

JUNE 2016

1 2 3 4 5  
6 7 8 9 10 11 12  
13 14 15 16 17 18 19  
20 21 22 23 24 25 26  
27 28 29 30

Monday	Tuesday	Wednesday	Thursday	Friday	Saturday	Sunday
						1
2	3	4	5	6	7	8
9	10	11	12	13	14	15
16	17	18	19	20	21	22
23	24	25	26	27	28	29
30	31					

18

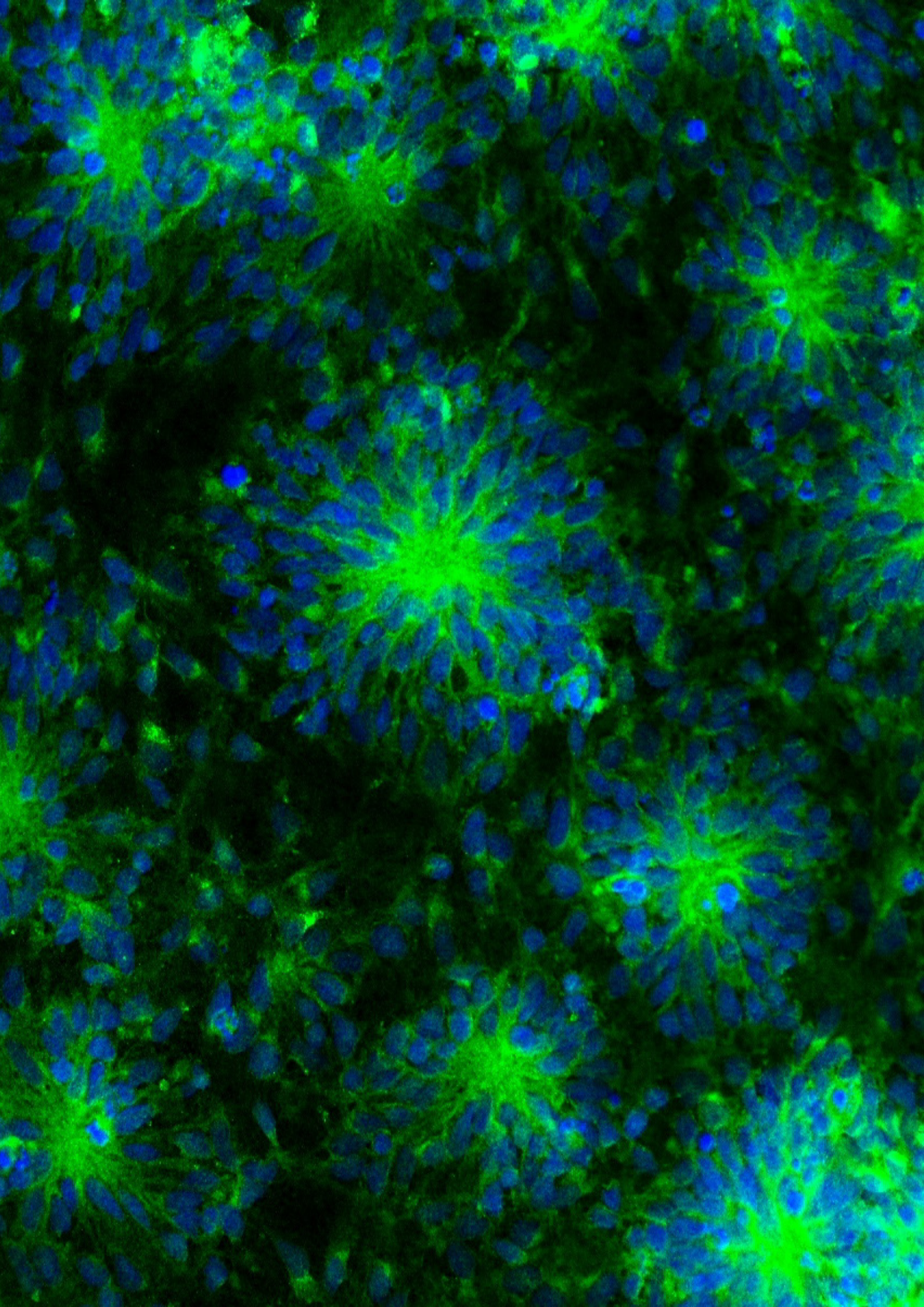
19

20

21

22

23



# JUNE 2016

MAY 2016

1  
2 3 4 5 6 7 8  
9 10 11 12 13 14 15  
16 17 18 19 20 21 22  
23 24 25 26 27 28 29  
30 31

JULY 2016

1 2 3  
4 5 6 7 8 9 10  
11 12 13 14 15 16 17  
18 19 20 21 22 23 24  
25 26 27 28 29 30 31

Monday	Tuesday	Wednesday	Thursday	Friday	Saturday	Sunday
		1	2	3	4	5
6	7	8	9	10	11	12
13	14	15	16	17	18	19
20	21	22	23	24	25	26
27	28	29	30			

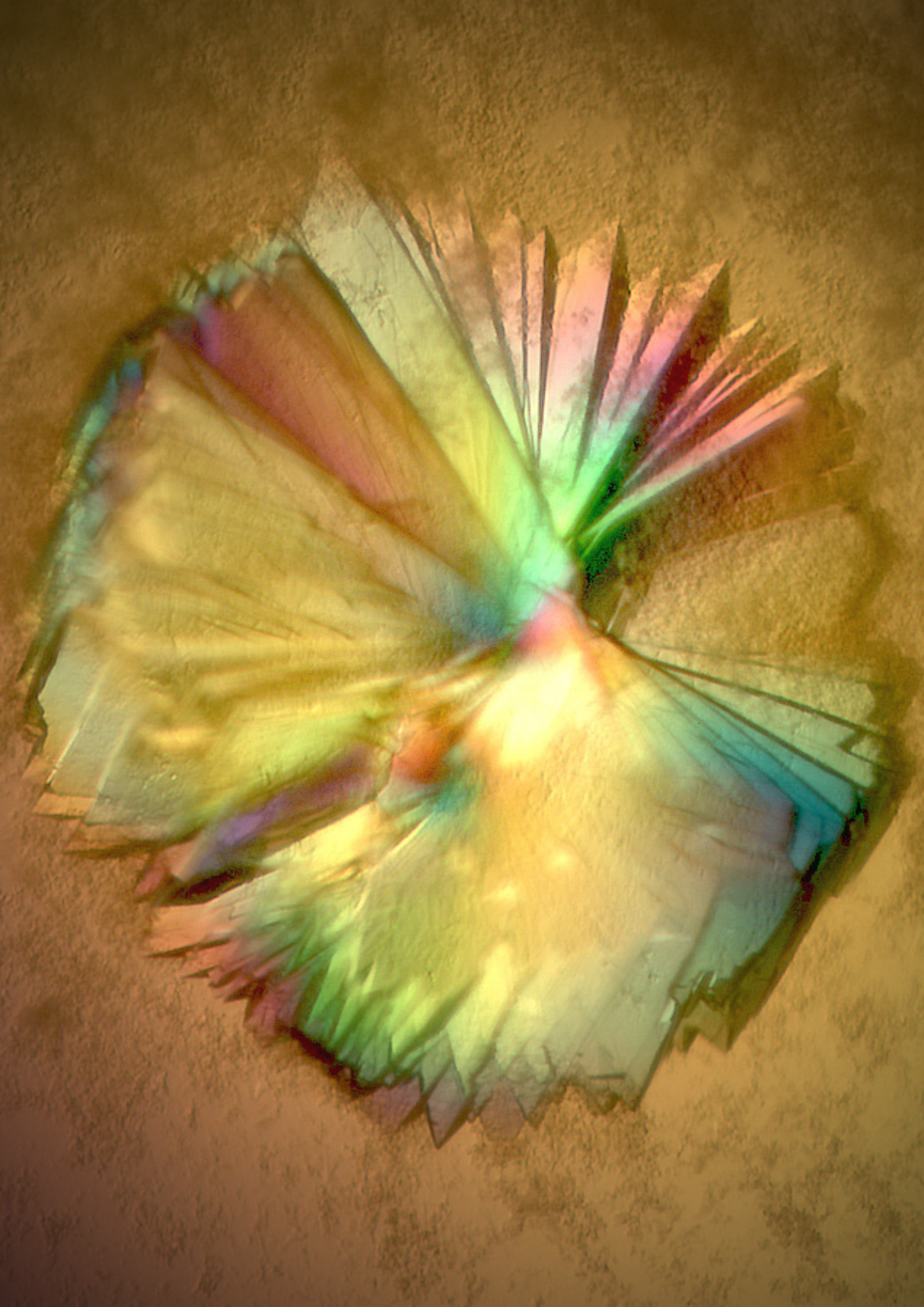
23

24

25

26

27



# JULY 2016

JUNE 2016

1 2 3 4 5  
6 7 8 9 10 11 12  
13 14 15 16 17 18 19  
20 21 22 23 24 25 26  
27 28 29 30

AUGUST 2016

1 2 3 4 5 6 7  
8 9 10 11 12 13 14  
15 16 17 18 19 20 21  
22 23 24 25 26 27 28  
29 30 31

Monday	Tuesday	Wednesday	Thursday	Friday	Saturday	Sunday
				1	2	3
4	5	6	7	8	9	10
11	12	13	14	15	16	17
18	19	20	21	22	23	24
25	26	27	28	29	30	31

27

28

29

30

31





# AUGUST 2016

July 2016

1 2 3  
4 5 6 7 8 9 10  
11 12 13 14 15 16 17  
18 19 20 21 22 23 24  
25 26 27 28 29 30 31

SEPTEMBER 2016

1 2 3 4  
5 6 7 8 9 10 11  
12 13 14 15 16 17 18  
19 20 21 22 23 24 25  
26 27 28 29 30

Monday	Tuesday	Wednesday	Thursday	Friday	Saturday	Sunday
1	2	3	4	5	6	7
8	9	10	11	12	13	14
15	16	17	18	19	20	21
22	23	24	25	26	27	28
29	30	31				

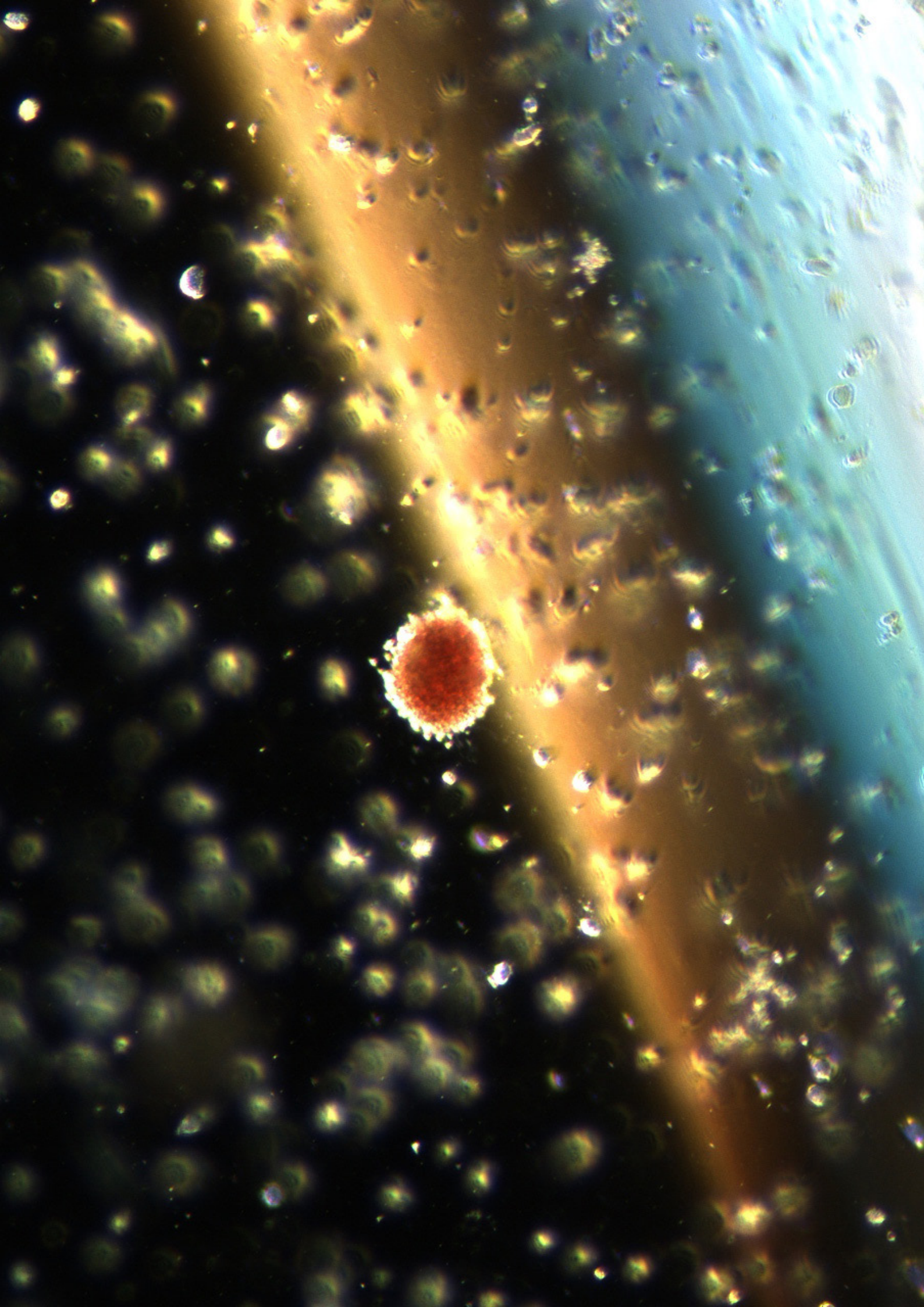
32

33

34

35

36



# SEPTEMBER 2016

AUGUST 2016

1 2 3 4 5 6 7  
8 9 10 11 12 13 14  
15 16 17 18 19 20 21  
22 23 24 25 26 27 28  
29 30 31

OCTOBER 2016

1 2  
3 4 5 6 7 8 9  
10 11 12 13 14 15 16  
17 18 19 20 21 22 23  
24 25 26 27 28 29 30  
31

Monday	Tuesday	Wednesday	Thursday	Friday	Saturday	Sunday
			1	2	3	4
5	6	7	8	9	10	11
12	13	14	15	16	17	18
19	20	21	22	23	24	25
26	27	28	29	30		

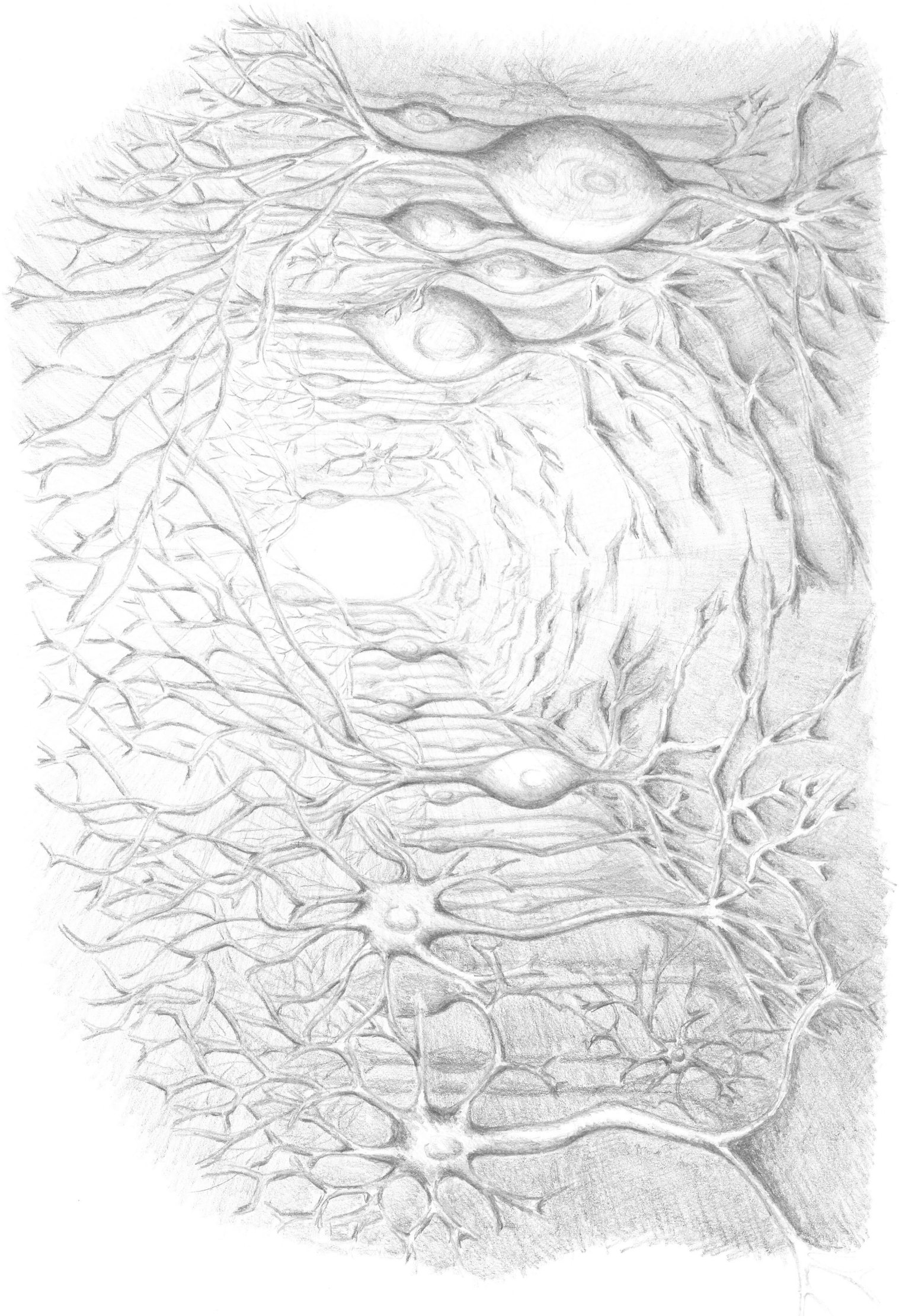
36

37

38

39

40



# OCTOBER 2016

SEPTEMBER 2016  
 1 2 3 4  
 5 6 7 8 9 10 11  
 12 13 14 15 16 17 18  
 19 20 21 22 23 24 25  
 26 27 28 29 30

NOVEMBER 2016  
 1 2 3 4 5 6  
 7 8 9 10 11 12 13  
 14 15 16 17 18 19 20  
 21 22 23 24 25 26 27  
 28 29 30

Monday	Tuesday	Wednesday	Thursday	Friday	Saturday	Sunday
					1	2
3	4	5	6	7	8	9
10	11	12	13	14	15	16
17	18	19	20	21	22	23
24	25	26	27	28	29	30
31						

40

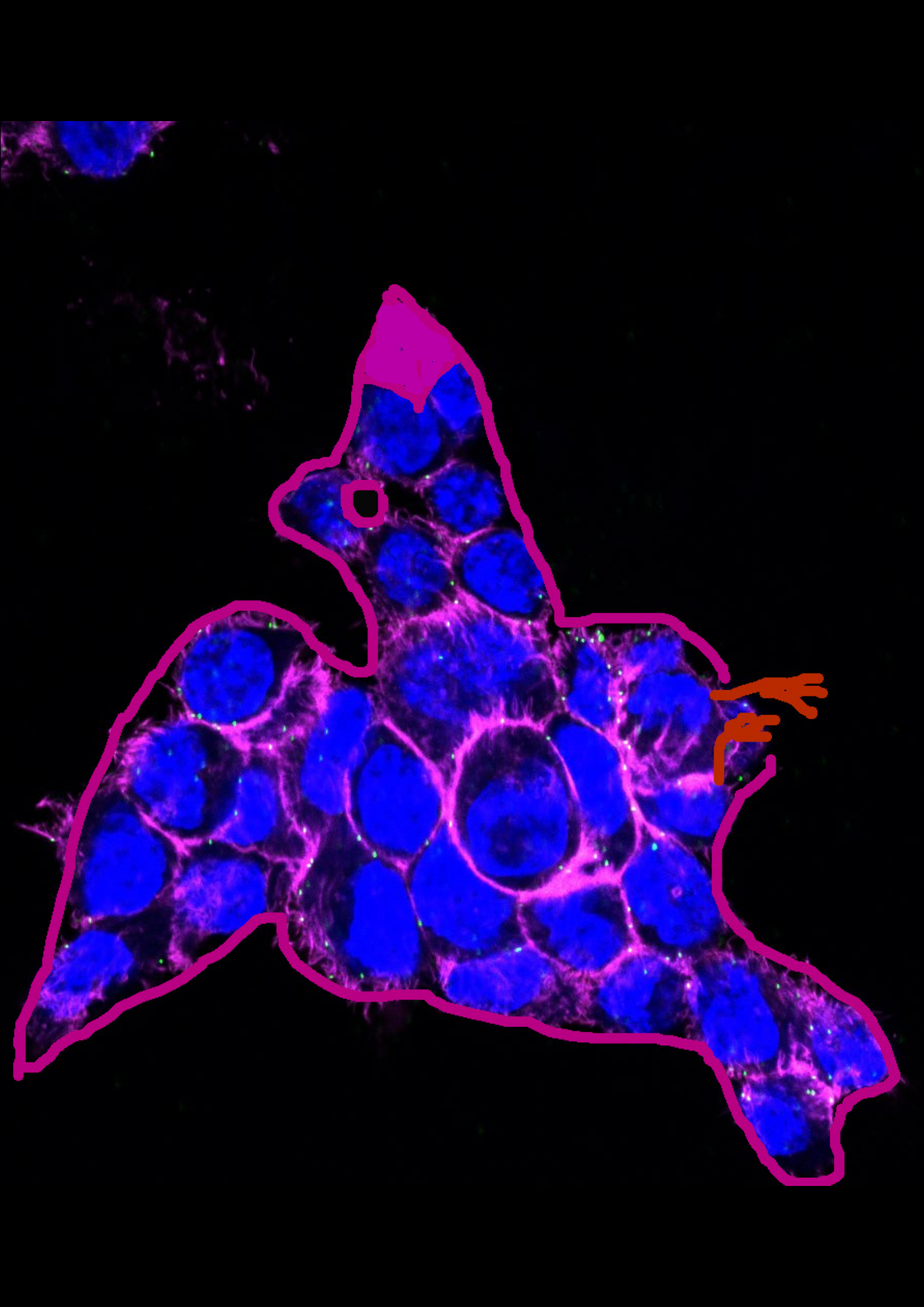
41

42

43

44

45



# NOVEMBER 2016

OCTOBER 2016

1 2  
3 4 5 6 7 8 9  
10 11 12 13 14 15 16  
17 18 19 20 21 22 23  
24 25 26 27 28 29 30  
31

DECEMBER 2016

1 2 3 4  
5 6 7 8 9 10 11  
12 13 14 15 16 17 18  
19 20 21 22 23 24 25  
26 27 28 29 30 31

Monday	Tuesday	Wednesday	Thursday	Friday	Saturday	Sunday
	1	2	3	4	5	6
7	8	9	10	11	12	13
14	15	16	17	18	19	20
21	22	23	24	25	26	27
28	29	30				

45

46

47

48

49





# DECEMBER 2016

NOVEMBER 2016  
 1 2 3 4 5 6  
 7 8 9 10 11 12 13  
 14 15 16 17 18 19 20  
 21 22 23 24 25 26 27  
 28 29 30

JANUARY 2017  
 1  
 2 3 4 5 6 7 8  
 9 10 11 12 13 14 15  
 16 17 18 19 20 21 22  
 23 24 25 26 27 28 29  
 30 31

Monday	Tuesday	Wednesday	Thursday	Friday	Saturday	Sunday
			1	2	3	4
5	6	7	8	9	10	11
12	13	14	15	16	17	18
19	20	21	22	23	24	25
26	27	28	29	30	31	

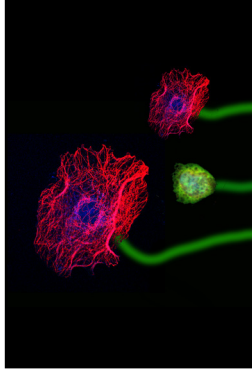
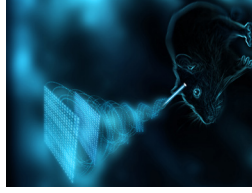
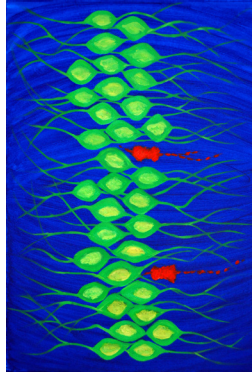
49

50

51

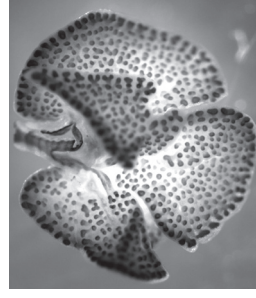
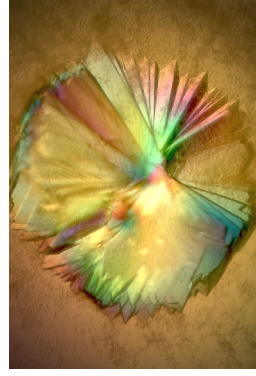
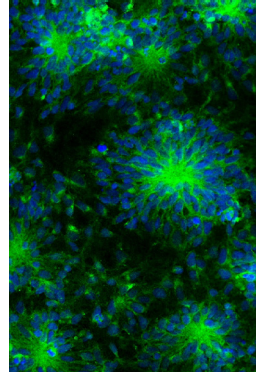
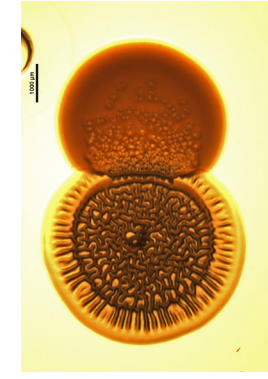
52

53



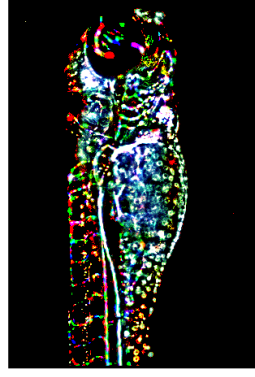
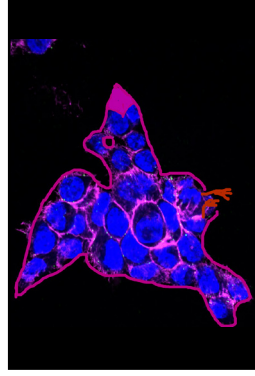
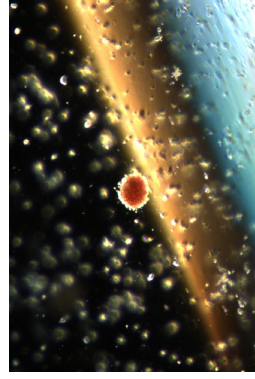
MIMS

NCMM



FIMM

DANDRITE



norden  
NordForsk

EMBL

# Nordic EMBL Partnership for Molecular Medicine

<http://www.embl.de/research/partnerships/remote/nordic/>

Nordforsk supports The Nordic EMBL Partnership for Molecular Medicine as the “Nordic Molecular Medicine Network” (NMMN), in order to enhance collaboration and knowledge exchange between the partnership nodes FIMM, NCMM, DANDRITE, MIMS and EMBL.